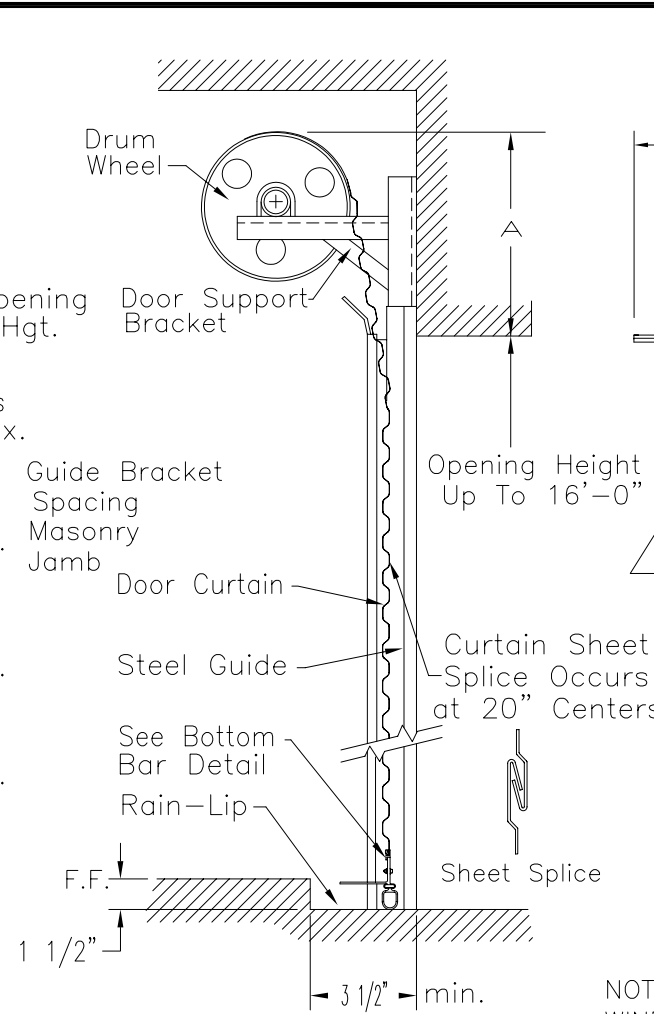


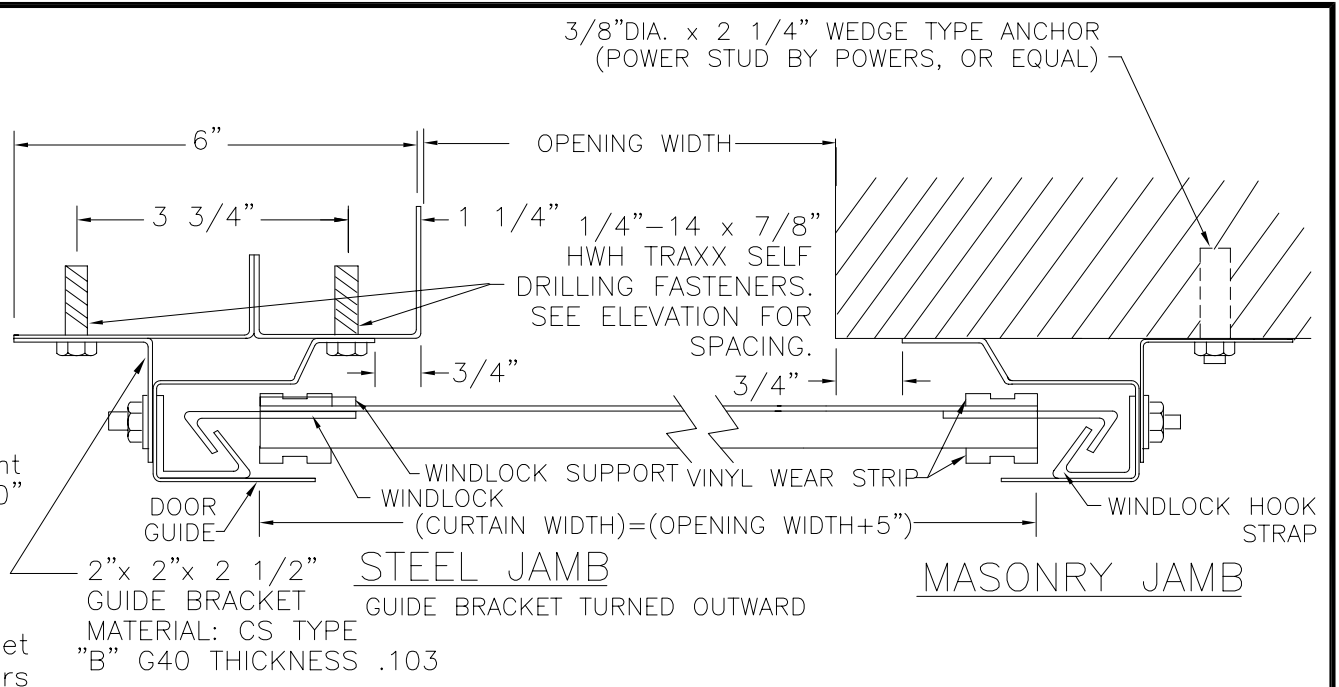
INTERIOR ELEVATION

Guide Fastener Spacing & Track Bracket Spacing Similar for Both Guides. Scale: None



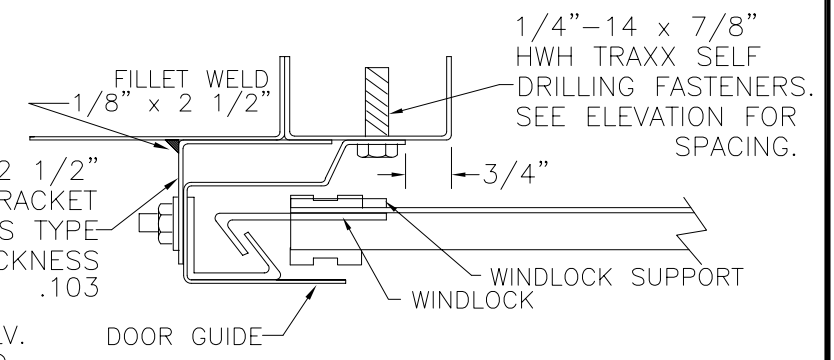
SECTION @ DOOR

Door Curtain: .018±.001 Hot Dip Galvanized Steel ASTM A-653 Structural Steel (Grade 80) With Full Coat Of Primer And Baked Polyester Finish Coat.



STEEL JAMB

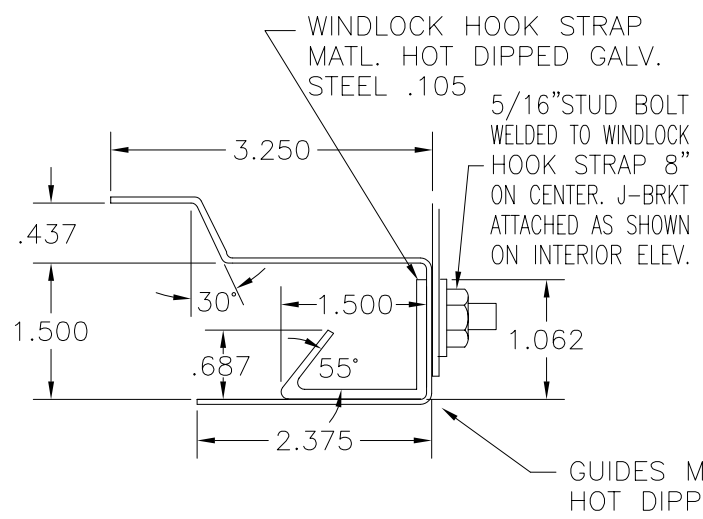
GUIDE BRACKET TURNED OUTWARD MATERIAL: CS TYPE "B" G40 THICKNESS .103



STEEL JAMB

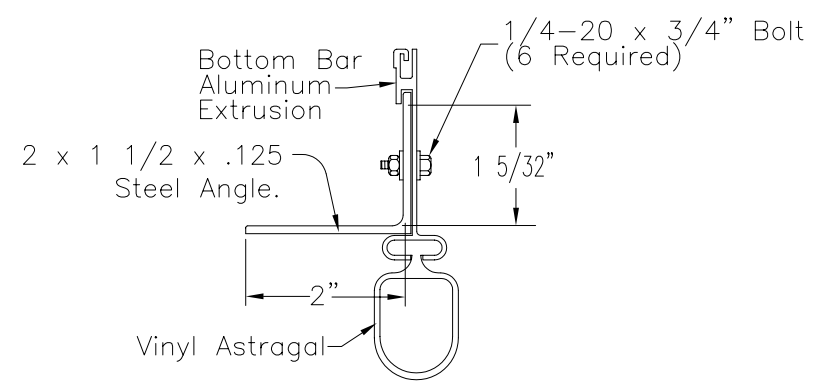
GUIDE BRACKET TURNED IN & WELDED ALTERNATE MOUNTING

NOTE WINDLOCKS STAMPED FROM .130" GALV. STEEL (.75"x 2.375") AND RIVETED TO ALL CORRUGATIONS (10) PER SHEET, WITH (2) 3/16" STEEL POP RIVETS SUPPORTED BY A 16 GA. STEEL BACK UP PLATE ON EXTERIOR SIDE OF DOOR CURTAIN.

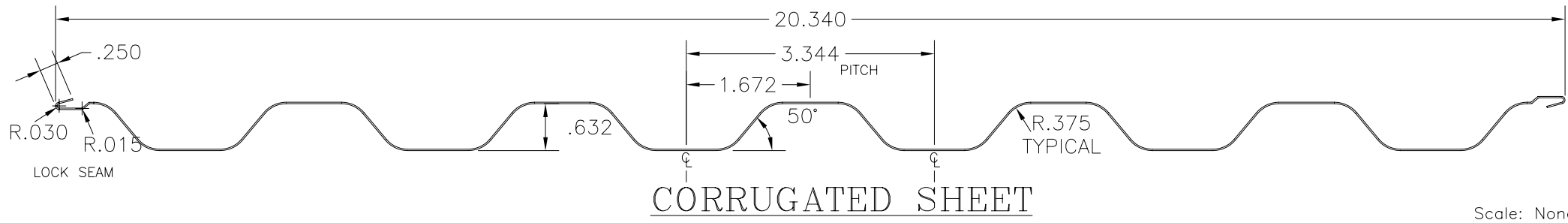


DOOR GUIDE

GUIDES MADE FROM .070 HOT DIPPED GALV. STEEL



BOTTOM BAR



CORRUGATED SHEET

Refer to test report Number USD-01-13 Dated 10/12/01

Doors designed for 26#/ft² POS. & 28#/ft² NEG. PSF wind load Maximum door size 20'-0" wide x 16'-0" high

D					
C					
B					
A					
DOOR	QTY.	WIDTH	HEIGHT	TYPE OF OPERATION	SPECIAL COMMENTS

MODEL 651-28

	JOB: _____	DATE: 10/12/01 SHEET: 1
	CONTRACTOR: _____	DRAWN BY: CDW
	ARCHITECT: _____	CHECKED BY: _____
	ADDRESS: _____	DRAWING NUMBER
	DISTRIBUTOR: _____	
	ADDRESS: _____	
	ENGINEER: J.H. DIXON JR P.E. LIC No. FL7768	

651-28-240 shop drawing

Scale: None

Oct. 12, 2001